

THE BINARY BULLETIN

The Official Newsletter of The Bits and Bytes Association



A.I DEVELOPMENT : Ethical Considerations & Implications

How can we ensure ethical and socially responsible A.I development for a better future?

Artificial Intelligence (AI) has revolutionized the way we live and work, and its potential for innovation seems endless. However, it is essential to consider the ethical implications of AI development as it has the potential to impact our society in both positive and negative ways.

One of the significant ethical considerations in AI development is the issue of bias. Bias can be introduced into AI systems when data sets used to train the algorithms are incomplete, biased or non-representative.

WHAT'S INSIDE THIS ISSUE?

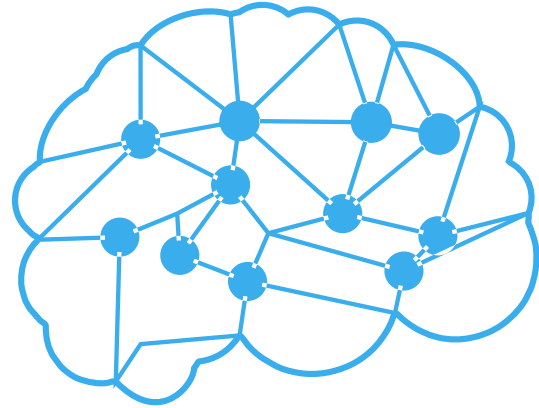
PAGE 1

A.I Development: Ethical Considerations & Implications

PAGE 3

The Role of A.I in Education

This can result in inaccurate predictions or decisions based on factors such as race, gender, and age, leading to discrimination and unfair treatment of individuals. It is crucial to ensure that AI systems are designed to be fair and unbiased by using diverse data sets, testing for bias and regularly monitoring the system for potential issues. Another consideration is that AI can automate jobs that were previously performed by humans, leading to job losses in some sectors.



Furthermore, the transparency and accountability of AI systems must be considered. It is essential to understand how AI makes decisions and to ensure that its decision-making processes are transparent and accountable. This is important for ensuring that AI systems are not used to perpetuate injustice or to make decisions that are harmful to individuals or society as a whole.

Finally, there are concerns around the use of AI for surveillance and control. Governments and organizations may use AI to monitor individuals, leading to concerns around privacy and civil liberties. It is essential to consider the potential for AI to be used in ways that violate human rights and to ensure that AI is developed and used responsibly.

In conclusion, AI development must be approached with a consideration for ethical implications. To ensure that AI is developed and used in a way that benefits society as a whole, it is important to consider bias, the impact on the workforce, transparency and accountability, and the potential for surveillance and control. AI developers and researchers must work together to ensure that AI systems are designed and implemented with ethics and social responsibility in mind.

"The pace of progress in artificial intelligence (I'm not referring to narrow AD) is incredibly fast. Unless you have direct exposure to groups like Deepmind, you have no idea how fast it is growing at a pace close to exponential. The risk of something seriously dangerous happening is in the five-year timeframe. 10 years at most."

ELON MUSK

[CEO of SpaceX]

THE ROLE OF A.I IN EDUCATION

5 Ways A.I is Transforming Education

PERSONALIZED LEARNING

AI can be used to create personalized learning experiences for students based on their individual needs and learning styles. AI algorithms can analyze student data, including their strengths and weaknesses, to recommend learning materials and activities that are tailored to their specific needs.

LANGUAGE LEARNING

AI-powered language learning tools can provide interactive and engaging experiences for students learning a new language. These tools can offer real-time feedback on pronunciation and grammar, as well as personalized exercises and activities to improve comprehension and fluency.

TUTORING SYSTEMS

AI-powered tutoring systems can provide personalized feedback to students, offering guidance and support as they work through challenging concepts. These systems can also adapt to a student's pace and level of understanding, providing additional support when needed.

AUTOMATED GRADING

AI can be used to grade assignments and assessments automatically, saving teachers time and allowing for more efficient feedback. This can be particularly useful for large classes or online courses.

PREDICTIVE ANALYTICS

AI can be used to analyze student data and predict which students are at risk of falling behind or dropping out of a course. This can allow teachers to intervene early and provide targeted support to students who need it.

CREDITS

Wajiha Waseem

Mohitpreet Kaur

Alyssa Johnson

Sochimazuru S.J. Noshiri



THE BITS AND BYTES ASSOCIATION